

Jukes & Co

Estate Agents



Holmesdale Road

, London, SE25 6PR

£200,000



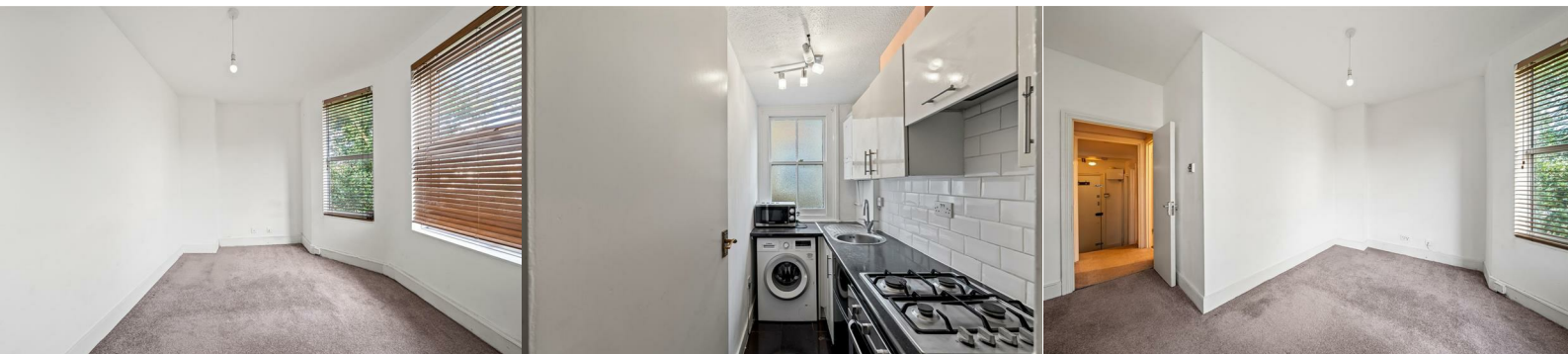
Stunning South-Facing One-Bedroom Victorian Conversion – Moments from Norwood Junction

This beautifully presented one-bedroom Victorian conversion flat is full of charm and perfectly located just a short walk from Norwood Junction Station. With a bright lounge, modern separate kitchen, modern bathroom and no onward chain.

Period features blended with modern design

Situated in a well-maintained Victorian building in the heart of Norwood Junction, you're just steps from local cafes, yoga studios, and the open green spaces of South Norwood Lakes.

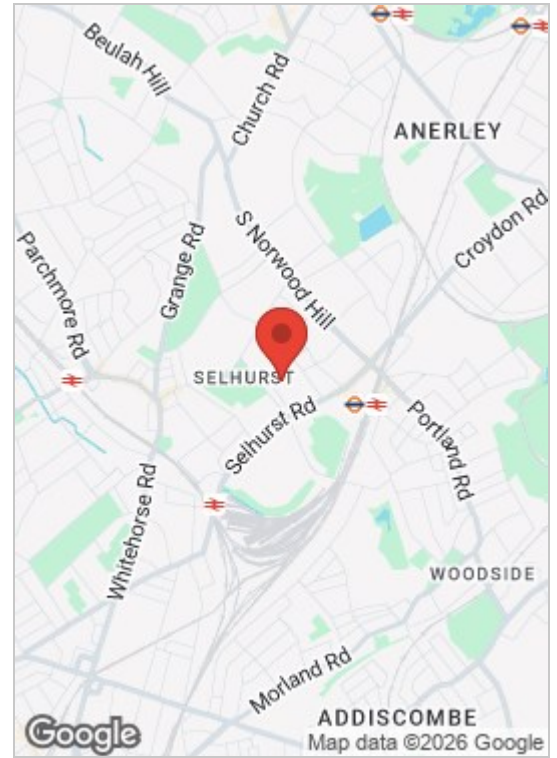
Excellent transport links:



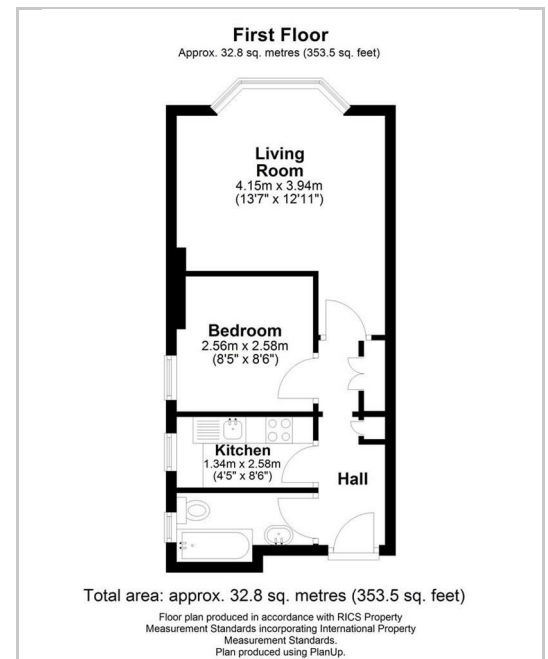
Modern Bathroom

White suite comprising of panelled bath, shower over, rectangular wash hand basin, low flush w.c, part tiled walls, glazed sash window.

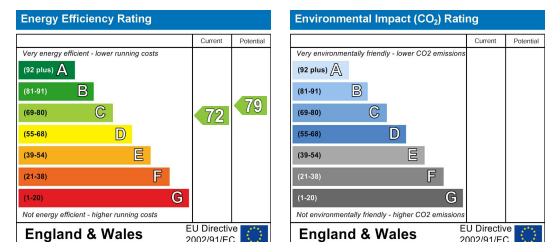
Area Map



Floor Plan



Energy Efficiency Graph



These particulars, whilst believed to be accurate are set out as a general outline only for guidance and do not constitute any part of an offer or contract. Intending purchasers should not rely on them as statements of representation of fact, but must satisfy themselves by inspection or otherwise as to their accuracy. No person in this firm's employment has the authority to make or give any representation or warranty in respect of the property.

Sales and Lettings

76 High Street, South Norwood, London SE25 6EB

T: 020 8653 9393 · F: 020 8771 5551 · E: sales@jukesestateagents.com · E: lettings@jukesestateagents.com

W: jukesestateagents.com